

ALARM SENSOR PAD ADAPTER

RX ONLY
NON-STERILE
NOT MADE WITH NATURAL RUBBER LATEX

IMPORTANT INFORMATION

Please read all instructions, warnings and precautions before use. Correct application is essential for proper functioning of the product.

To be used in conjunction with DeRoyal alarm sensor pads and Posey® fall alarms, only for the person for which it is prescribed by a healthcare professional and only for the use it was intended.

INTENDED USE

The DeRoyal alarm sensor pad adapter is intended to be prescribed by a properly licensed practitioner for compatibility and use between DeRoyal alarm sensor pads and Posey® fall alarms.

CONTRAINDICATIONS

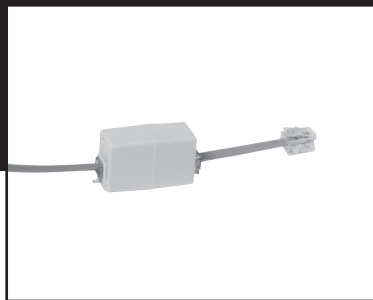
The DeRoyal alarm sensor pad adapter should not be used with alarms other than what are indicated.

WARNINGS

- Fully inspect adapter for damaged or missing components prior to application.
- Test this adapter with alarm and pad before each use for proper connection and function.
- Adapter should only be used to connect a DeRoyal bed or chair pad with a Posey® alarm.
- Discontinue use of the adapter if it becomes damaged in any way, limiting its' ability to perform as intended.
- Do not use without reading all instructions for use.
- Follow facility protocols and guidelines for frequency of patient monitoring.

INSTRUCTIONS FOR USE

1. Without removing the short cable that comes plugged into the adapter, plug the end of the alarm sensor pad into the open end of the adapter.
2. Plug the available end of the short cable into the bottom of the alarm.
3. Put pressure on the alarm sensor pad to activate the pad



and monitor. The alarm will beep two times to indicate that the alarm sensor pad and fall alarm are in use. The "Monitor Status" light will blink while pressure remains on the pad. When pressure is removed, the fall alarm will sound the alarm.

4. If the "Pad Lost Light" is on, check to make sure the cord is plugged in and reset the system.
5. Test the system before use.

SIZING Universal

CARE INSTRUCTIONS

Wipe clean with disinfectant wipes. After cleaning, test device before each use.

WARRANTY

DEROYAL PRODUCTS ARE WARRANTED FOR NINETY (90) DAYS FROM THE DATE OF SHIPMENT FROM DEROYAL AS TO PRODUCT QUALITY AND WORKMANSHIP. DEROYAL'S WRITTEN WARRANTIES ARE GIVEN IN LIEU OF ANY IMPLIED WARRANTIES, INCLUDING WARRANTIES OF MERCHANTABILITY OR FITNESS FOR A PARTICULAR PURPOSE.

DISCLAIMER

Compatibility has been tested with the following Posey® units: 8345, 8350, 8374 and their corresponding combo units. Reference to compatibility or trademarks does not imply approval or endorsement by J.T. Posey Company. Posey is a trademark or registered trademark of J.T. Posey Company.



Improving Care. Improving Business.®

Distributed by DeRoyal Industries, Inc.
200 DeBusk Lane
Powell, TN 37849 U.S.A.
888.938.7828 | 865.938.7828
www.deroyal.com

©2016 DeRoyal Industries, Inc. All Rights Reserved.
Part#0-907 Revision 6/16

ALARM SENSOR PAD ADAPTER

RX ONLY
NON-STERILE
NOT MADE WITH NATURAL RUBBER LATEX

IMPORTANT INFORMATION

Please read all instructions, warnings and precautions before use. Correct application is essential for proper functioning of the product.

To be used in conjunction with DeRoyal alarm sensor pads and Posey® fall alarms, only for the person for which it is prescribed by a healthcare professional and only for the use it was intended.

INTENDED USE

The DeRoyal alarm sensor pad adapter is intended to be prescribed by a properly licensed practitioner for compatibility and use between DeRoyal alarm sensor pads and Posey® fall alarms.

CONTRAINDICATIONS

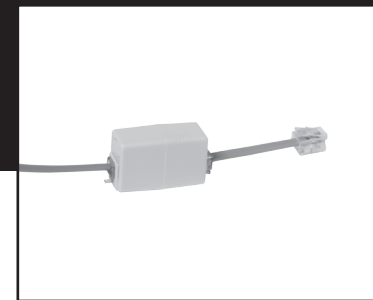
The DeRoyal alarm sensor pad adapter should not be used with alarms other than what are indicated.

WARNINGS

- Fully inspect adapter for damaged or missing components prior to application.
- Test this adapter with alarm and pad before each use for proper connection and function.
- Adapter should only be used to connect a DeRoyal bed or chair pad with a Posey® alarm.
- Discontinue use of the adapter if it becomes damaged in any way, limiting its' ability to perform as intended.
- Do not use without reading all instructions for use.
- Follow facility protocols and guidelines for frequency of patient monitoring.

INSTRUCTIONS FOR USE

1. Without removing the short cable that comes plugged into the adapter, plug the end of the alarm sensor pad into the open end of the adapter.
2. Plug the available end of the short cable into the bottom of the alarm.
3. Put pressure on the alarm sensor pad to activate the pad



and monitor. The alarm will beep two times to indicate that the alarm sensor pad and fall alarm are in use. The "Monitor Status" light will blink while pressure remains on the pad. When pressure is removed, the fall alarm will sound the alarm.

4. If the "Pad Lost Light" is on, check to make sure the cord is plugged in and reset the system.
5. Test the system before use.

SIZING Universal

CARE INSTRUCTIONS

Wipe clean with disinfectant wipes. After cleaning, test device before each use.

WARRANTY

DEROYAL PRODUCTS ARE WARRANTED FOR NINETY (90) DAYS FROM THE DATE OF SHIPMENT FROM DEROYAL AS TO PRODUCT QUALITY AND WORKMANSHIP. DEROYAL'S WRITTEN WARRANTIES ARE GIVEN IN LIEU OF ANY IMPLIED WARRANTIES, INCLUDING WARRANTIES OF MERCHANTABILITY OR FITNESS FOR A PARTICULAR PURPOSE.

DISCLAIMER

Compatibility has been tested with the following Posey® units: 8345, 8350, 8374 and their corresponding combo units. Reference to compatibility or trademarks does not imply approval or endorsement by J.T. Posey Company. Posey is a trademark or registered trademark of J.T. Posey Company.



Improving Care. Improving Business.®

Distributed by DeRoyal Industries, Inc.
200 DeBusk Lane
Powell, TN 37849 U.S.A.
888.938.7828 | 865.938.7828
www.deroyal.com

©2016 DeRoyal Industries, Inc. All Rights Reserved.
Part#0-907 Revision 6/16