



**ADVANCING** the art and science of **NPWT**  
negative pressure wound therapy

# Why DeRoyal® PRO Series?



## **ENGINEERED** Next Generation NPWT

Since 2006, DeRoyal has been providing Negative Pressure Wound Therapy (NPWT) accessories, kits and state-of-the-art Prospera® series devices to assist in healing hard-to-heal wounds.

## **SCIENTIFIC/CLINICAL** Benefits of VPT®

Variable Pressure Technology (VPT®) is proven to be the most effective form of NPWT providing a simple, comfortable and efficient wound treatment system.<sup>5</sup>

## **CARE + REVENUE** Improving Care While Reducing Cost

The DeRoyal® NPWT system and protocols, enabled with the Continuum® inventory management system, ensure optimal outcomes at reduced cost levels.

## **LOCATE & TRACK** GPS & RFID Technology

State of the art tracking systems provides detailed patient reporting, real-time supply chain management, and anytime/anywhere dashboard access to identify negative pressure device location.

## **INCREASED** Continuity of Care

Provide continuity of care with DeRoyal's breadth and depth of product line offerings, software and hardware innovations, and devices that can seamlessly transition from hospital to home.

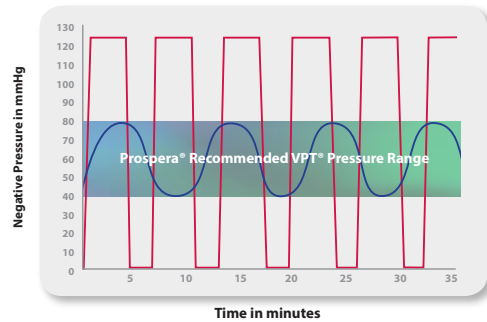
The **Advanced** NPWT Solution™

# SCIENTIFIC/CLINICAL Benefits of VPT® Technology

Research confirms intermittent negative pressure increases blood to the wound site more effectively than continuous negative pressure, and proliferation of new granulation tissue is significantly higher.<sup>1,2</sup> Until now, pumps available on the market were unable to provide practical, comfortable variable pressure therapy. Prospera® VPT® technology is engineered to deliver comfortable, massaging variable pressure therapy for best results and patient comfort.

- **Customizable time and pressure settings.**
- **Calibrated to increase and decrease in comfortable 5mmHg increments between -40mmHg and -80mmHg, providing a gentle massaging effect.**
- **Virtually eliminates painful high and low pressure spikes.**<sup>2,3,4</sup>
- **Always maintains negative pressure, never dropping to 0mmHg.**

## Variable Pressure Therapy (VPT®)\*



- Intermittent pressure levels of other brands = -125 to 0 mmHg (spike)
- VPT pressure ranges of Prospera® = -80 to -40 mmHg (gradual)

# CARE + REVENUE Improving Care While Reducing Cost

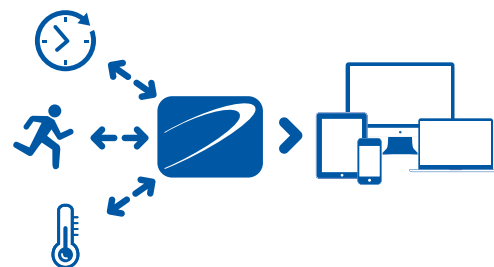
## CONTINUUM OF CARE FOR ALL

Leveraging RFID, GPS and cloud-based software and systems, Continuum® inventory management system and Continuum® Mobile system are designed to enable NPWT devices and care to flow seamlessly from Hospital (Part A Medicare Insurance) to Home/LTC/SNF (Part B Medicare Insurance). Continuum's unmatched technology works in tandem with healthcare systems, insurance providers, and standalone components to provide unparalleled levels of automation and precision to the world of NPWT. Our technology enables facilities to increase efficiencies, better manage costs, and establish complete visibility for the facility's supply chain and discharge planning departments.

Use the Continuum® System to increase control of your patient's care, discharge process, supply chain logistics and visibility.

### Features include:

- Automated daily, weekly, and monthly reporting
- 99% accurate usage and charge capture
- Tracks NPWT units throughout the hospital and hospital system – even after discharge!
- Provides ability to submit charges for billing when applicable
- Data-driven supply chain management
- Alerts clinicians of patients returning to hospital for new or additional care
- Real-time inventory knowledge
- Guarantees user accountability via digital chain of custody technology
- Ensures an intelligent, secure inventory location
- Provides visibility into product movement and ownership



# The Prospera® Family of NPWT Units:

the right fit  
for all your  
wound care needs!



	PRO-III®	PRO-II®	PRO-MINI®
Pressure settings -20 – 200MMgh	X	X	X
Variable Pressure Therapies (VPT®)	X	X	X
Adjustable Sensitivity Setting	X	X	
Constant Pressure Therapies (CPT®)	X	X	X
Over 24-hour battery run time	X	X	X
Proprietary Prospera® Dual Filtration System	X	X	
Contoured design for patient comfort		X	X
Carrying case that can be worn on the waist or over the shoulder		X	X
Discreet, disposable canister		X	X
Color coded display screens	X	X	X
Lightweight		X	X
Extra small yet fully functional			X
Can be worn on belt			X
IV and Bedside Stand/Rack compatible	X	X	
PDAC assigned HCPC – E2402*	X	X	X

\* See page 14

# NPWWT

## UNIT & ACCESSORIES OFFERING

THERAPY DEVICES			
UNITS	NP-1000M-US	PROSPERA® PRO-MINI™	1/Cs
	NP-2000	PROSPERA® PRO-II®	1/Cs
	NP-2000GPS	PROSPERA® PRO-II® w/Continuum® Mobile System	1/Cs
	NP-3000	PROSPERA® PRO-III®	1/Cs
	NP-3000GPS	PROSPERA® PRO-III® w/Continuum® Mobile System	1/Cs



PROSPERA® CANISTERS							
	SKU	UNIT	Canister	Tubing & Filter	Solidifier	6-in-1 Tubing	Case Count
PRO-MINI™	NP-1140-US	PRO-MINI™	YES	N/A	NO	N/A	10
	NP-1400-US	PRO-MINI™	YES	N/A	NO	N/A	10
	NP-1600-US	PRO-MINI™	YES	N/A	NO	N/A	10
PRO-II®	NP-0250	PRO-II®	YES	N/A	YES	N/A	10
	NP-0250N	PRO-II®	YES	N/A	NO	N/A	10
	NP-0450	PRO-II®	YES	N/A	YES	N/A	10
	NP-0450N	PRO-II®	YES	N/A	NO	N/A	10
PRO-III®	NP-1000	PRO-III®	YES	YES	YES	NO	10
	NP-1002	PRO-III®	NO	YES	NO	NO	10
	NP-1005	PRO-III®	YES	NO	YES	NO	10
	NP-1006	PRO-III®	YES	YES	YES	YES	10
	NP-1007	PRO-III®	NO	NO	NO	YES	5
	NP-1008	PRO-III®	YES	NO	NO	YES	10
NP-1009*	PRO-III®	YES	YES	NO	YES	10	

\* Build to Order



### PRO-MINI™ Canisters

NP-1140-US	140cc
NP-1400-US	400cc
NP-1600-US	600cc



### PRO-II® Canisters

NP-0250	140cc
NP-0450	450cc



### PRO-III® Canisters

NP-1006	Canister w/Solidifier, Patient Tube & Filter
---------	--

ACCESSORIES			
ACCESSORIES	NP-1001	PRO-III® Canister Ring	10/Cs
	NP-2002	Universal Power Cord	1/Cs
	NP-350	Incision Kit	5/Cs
	46-325B	6" x 8" Transeal® TR Dressing	100/Cs
	46-326B	8" x 12" Transeal® TR Dressing	100/Cs



### PRO-III® Canisters Ring

NP-1001

# ADVANCING

the art and science of NPWT with the **largest selection** of kits and accessories

## BLACK FOAM KITS WITH TRANSEAL® PLUS

KIT #	CONTENTS	QUANTITY
<i>All kits contain 1 TopDraw® dome, 1 Measuring Device, 1 Adhesive Remover Wipe, and 1 Skin Barrier Wipe in addition to the items listed below.</i>		
NP-0005 <i>(small)</i>	1 Transeal® Plus drape 8" x 12" 1 black foam square (10cm x 8cm x 3cm)	10/Cs
NP-0006 <i>(medium)</i>	2 Transeal® Plus drape 8" x 12" 1 black foam square (20cm x 12.5cm x 3cm)	10/Cs
NP-0007 <i>(large)</i>	3 Transeal® Plus drape 8" x 12" 1 black foam square (25cm x 15cm x 3cm)	10/Cs
NP-0008 <i>(x-large)</i>	4 Transeal® Plus drape 8" x 12" 1 black foam square (45cm x 30cm x 3cm)	10/Cs



## BLACK FOAM KITS WITH TRANSEAL® TR

KIT #	CONTENTS	QUANTITY
<i>All kits contain 1 TopDraw® dome, 1 Measuring Device, 1 Adhesive Remover Wipe, and 1 Skin Barrier Wipe in addition to the items listed below.</i>		
NP-0500 <i>(small)</i>	1 Transeal® Triple Release drape 8" x 12" 1 black foam square (10cm x 8cm x 3cm)	10/Cs
NP-0501 <i>(medium)</i>	2 Transeal® Triple Release drape 8" x 12" 1 black foam square (20cm x 12.5cm x 3cm)	10/Cs
NP-0502 <i>(large)</i>	3 Transeal® Triple Release drape 8" x 12" 1 black foam square (25cm x 15cm x 3cm)	10/Cs
NP-0503 <i>(x-large)</i>	4 Transeal® Triple Release drape 8" x 12" 1 black foam square (45cm x 30cm x 3cm)	10/Cs



## BLACK FOAM KITS WITH TRANSEAL® TR & DERMANET® AG+

**CONTAINS SILVER**

KIT #	CONTENTS	QUANTITY
<i>All kits contain 1 TopDraw® dome, 1 Measuring Device, 1 Adhesive Remover Wipe, and 1 Skin Barrier Wipe in addition to the items listed below.</i>		
NP-0505 <i>(small)</i>	1 Transeal® Triple Release drape 8" x 12" 1 Dermanet® AG+ 4" x 4" dressing 1 black foam square (10cm x 8cm x 3cm)	10/Cs
NP-0506 <i>(medium)</i>	2 Transeal® Triple Release drape 8" x 12" 1 Dermanet® AG+ 8" x 8" dressing 1 black foam square (20cm x 12.5cm x 3cm)	10/Cs
NP-0507 <i>(large)</i>	3 Transeal® Triple Release drape 8" x 12" 1 Dermanet® AG+ 8" x 18" dressing 1 black foam square (25cm x 15cm x 3cm)	10/Cs



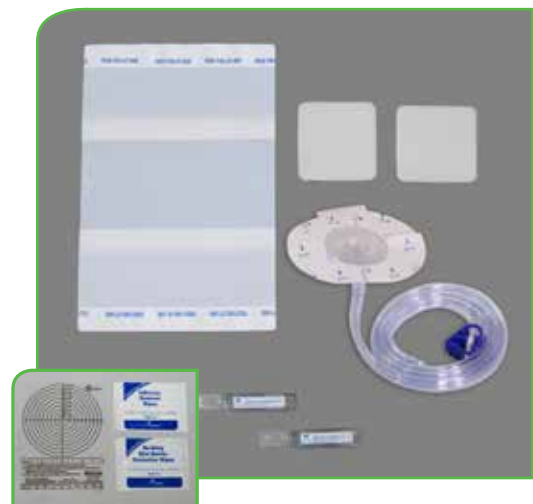
## THIN BLACK FOAM KITS WITH TRANSEAL® PLUS

KIT #	CONTENTS	QUANTITY
<i>All kits contain 1 TopDraw® dome, 1 Measuring Device, 1 Adhesive Remover Wipe, and 1 Skin Barrier Wipe in addition to the items listed below.</i>		
NP-0515 <i>(small)</i>	1 Transeal® Plus drape 8" x 12" 1 thin black foam square (10cm x 8cm x 1.5cm)	10/Cs
NP-0516 <i>(medium)</i>	2 Transeal® Plus drape 8" x 12" 1 thin black foam square (20cm x 12.5cm x 1.5cm)	10/Cs
NP-0517 <i>(large)</i>	3 Transeal® Plus drape 8" x 12" 1 thin black foam square (25cm x 15cm x 1.5cm)	10/Cs



## WHITE FOAM KITS WITH TRANSEAL® TR

KIT #	CONTENTS	QUANTITY
<i>All kits contain 1 TopDraw® dome, 1 Measuring Device, 2 saline 30 ml, 1 Adhesive Remover Wipe, and 1 Skin Barrier Wipe in addition to the items listed below.</i>		
NP-0103 <i>(medium)</i>	1 Transeal® Triple Release drape 8" x 12" 2 white foam square (3.75" x 3.75" each)	10/Cs
NP-0104 <i>(large)</i>	2 Transeal® Triple Release drape 8" x 12" 2 white foam square (6" x 6" each)	10/Cs

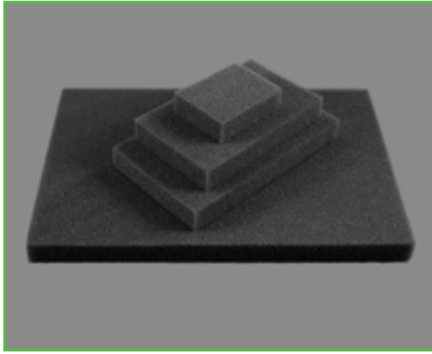


## GAUZE KITS WITH TRANSEAL® TR

KIT #	CONTENTS	QUANTITY
<i>All kits contain 1 TopDraw® dome, 1 Measuring Device, Saline 30 ml, 1 Adhesive Remover Wipe, and 1 Skin Barrier Wipe in addition to the items listed below.</i>		
NP-0013 <i>(small)</i>	1 Transeal® Triple Release drape 8" x 12" 1 AMD Gauze Sponge 1 Saline (30ml)	10/Cs
NP-0014 <i>(medium)</i>	2 Transeal® Triple Release drape 8" x 12" 1 AMD Gauze Sponge (2/pk) 1 Saline (30ml)	10/Cs
NP-0015 <i>(large)</i>	3 Transeal® Triple Release drape 8" x 12" 1 Sponge Kerlix AMD Roll 2 Saline (30ml/ea)	10/Cs



# ACCESSORIES



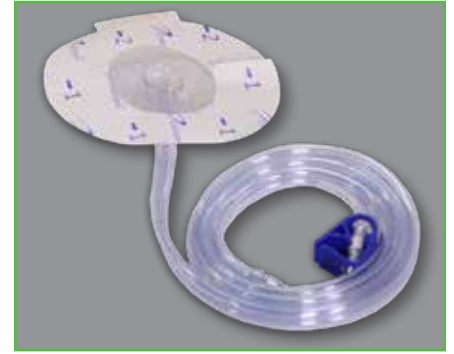
## Black Foam (10/Cs)

STANDARD		THIN
NP-200	SM	NP-204 SM
NP-201	MD	NP-205 MD
NP-202	LG	NP-206 LG



## White Foam (10/Cs)

NP-906b	MED
NP-907b	LARGE
NP-908b	X-LARGE



## TopDraw® Dome Connector

NP-180 (10/Cs)



## Drain Conversion

NP-0019	CHANNEL DRAIN	(10/Cs)
NP-0024	ROUND DRAIN	(10/Cs)
NP-0025	FLAT DRAIN	(10/Cs)



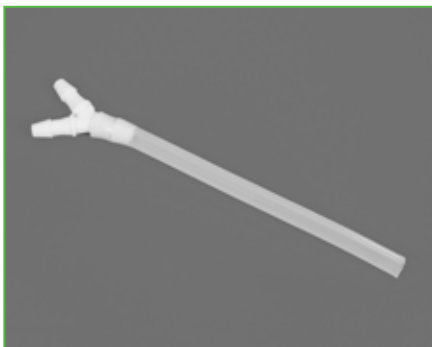
## Bed Rack

NP-170	PRO-II®	(1/Cs)
NP-170IV	PRO-II® / IV	(5/C)
NP-140	PRO-III®	(1/Cs)



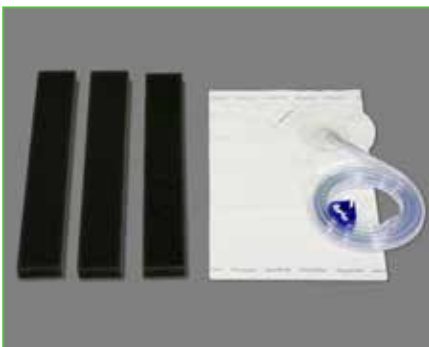
## IV-Pole Holder

NP-150 (1/Cs)



## Universal Y-Connector

NP-120-10	(10/Cs)
NP-120	(100/Cs)
32-2071	(Sterile)



## Bridge Kit

NP-300 (5/Cs)



## Carrier Bags

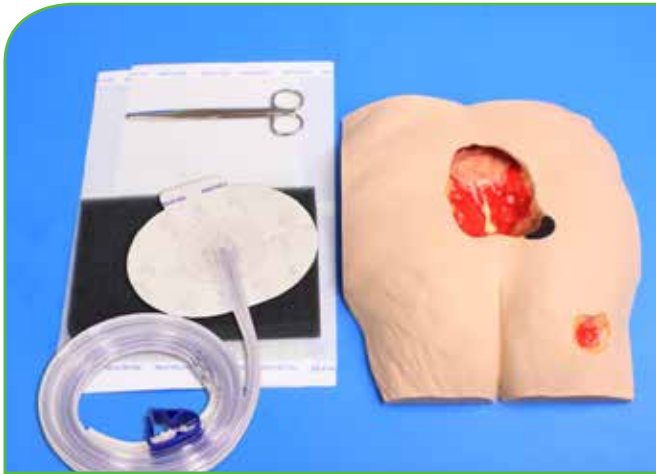
NP-2001L	PRO-II® LARGE BAG	(1/Cs)
NP-3001	PRO-III® BAG	(1/Cs)
NP1000C	PRO-MINI™ BAG	(1/Cs)



# DOMES KIT APPLICATION

## Step-by-Step Process to Applying TopDraw® Dome Kits

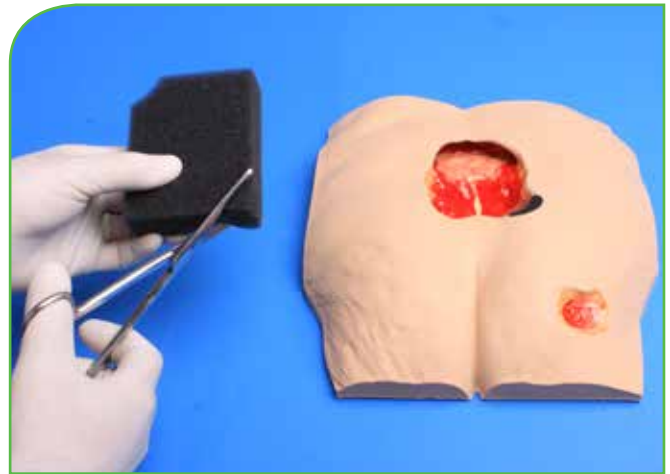
**IMPORTANT: CONSULT INSTRUCTIONS FOR USE FOR COMPLETE DIRECTIONS, WARNINGS, AND PRECAUTIONS.**



### STEP 1

(Prepare wound according to facility protocol.)

Cleanse wound gently and carefully with saline until the wound is free of debris and dead tissue. Gently blot dry the wound edges, periwound margin, and all skin to be covered by transparent dressing.



### STEP 2

If desired, place a primary, non-adherent dressing such as Transeal® dressing on the wound bed. Do not overlap onto intact skin.

- a. For foam dressing application, measure the wound and cut the foam to the appropriate size and shape. Gently place the foam dressing into the wound cavity. Fill the entire wound cavity but do not overlap on the intact skin. Do not cut the foam over the wound, as small fragments may fall into the wound bed. Do not force or push the foam dressing into the wound as this may cause further injury to the wound.
- b. For gauze dressing application, open the gauze and moisten with saline. Gently place the gauze in the wound bed. Fill the entire wound cavity but do not overlap on the intact skin. Do not force, push or over pack the gauze into the wound as this may cause further injury to the wound.



### STEP 3

Size and cut the Transeal® transparent dressing to cover the primary dressing. Make sure the primary dressing is completely covered and the Transeal® overlaps on the intact skin by at least one inch on all edges of the wound. Proper Transeal® application is the key to fewer alarms and less loss of seal issues.



### STEP 4

Gently press the top of the Transeal® dressing to ensure adhesive adheres to the skin. Remove the carrier layer of the Transeal.



## STEP 5

Gently lift the Transeal® dressing with your thumb and forefinger. Cut a 2 to 2.5 cm hole in the Transeal over the center of the wound using either scissors or scalpel.



## STEP 6

Do not cut a slit, as a slit could collapse and block the suction when pressure is applied.



## STEP 7

Hold the tab and pull the paper to release the liner from the dome pad.



## STEP 8

Place the center of the dome pad directly over the cut hole. Ensure the seal is completely adhered to the skin.

**IMPORTANT: CONSULT INSTRUCTIONS FOR USE FOR COMPLETE DIRECTIONS, WARNINGS, AND PRECAUTIONS.**



## STEP 9

Peel the clear backing liner off the connector. Peel off the tabs, and pat around the dome pad to ensure the seal is completely adhered to the skin.



## STEP 10

Connect the dome pad tubing to the end of the connector tube attached to the canister.  
(Every dome connector will have an adapter included.)



## STEP 11

Turn on the NPWT system. Make sure that the pressure is set at the proper mmHg per doctor's order.



## STEP 12

Turn on NPWT system to allow primary dressing, dome pad, and Transeal® to compress. A compressed look means the Transeal® is properly adhered to the skin and negative pressure is reaching the wound.

**IMPORTANT: CONSULT INSTRUCTIONS FOR USE FOR COMPLETE DIRECTIONS, WARNINGS, AND PRECAUTIONS.**

## TECHNICAL DATA

### PRO-II® & PRO-III®

#### Air-flow rate of pump

- 8 liters/min

#### Negative pressure

- Max. -200mmHg (Conversion factor: 1kPa ~ 7.5mmHg)

#### Collection canister (PRO-III®)

- Disposable canister systems

#### Suction tubing (PRO-III®)

- Various drainage systems, depending on supplier and specific applications. Type and kind of use are determined by the medical staff.

#### Nominal voltage of power supply adapter

- 100-240V primary, 12VDC secondary

#### Power requirements

- 100-240V, 50/60Hz, 45W

#### Maximum load current

- 1.25 A

#### Rechargeable battery

- 7.4V, 4.4Ah – lithium-ion battery

#### Charging time of

- empty battery 6 – 7 hours
- half empty battery 3 – 3.5 hours

#### PRO-II® dimensions (W x H x D)

- 8.4" x 6.5" x 3.5"

#### PRO-III® dimensions (W x H x D)

- 11.4" x 10.2" + 3.9" (canister) x 5.1"

#### PRO-II® weight (basic unit)

- 1.3kg (2.65 lbs.), with canister

#### PRO-III® weight (basic unit)

- 1.8kg (3.97 lbs.)

#### Operating time

- AC operation: continuous operation
- DC operation: approx. 24 – 48 hours, depending on use

### PRO-MINI™

#### Weight (with empty container attached)

- 11.3 oz. (320g)

#### Dimensions

- Length: 3.35" (8.5cm)
- Height: 5" (12.8cm)
- Width: 2" (5.2cm)

#### Mobility

- Portable. Carrying case available

#### Canisters

- Volume: 140ml, 400ml and 600ml (optional)

#### Modes

- Continuous mode, VPT® mode

#### Electrical Data

- |                                |   |
|--------------------------------|---|
| • External Power Supply Input  | AC100V-240V, 50-60HZ<br>0.5A/Voltage tolerance ±10% |
| • External Power Supply Output | DC5V±0.25, 1.5A                                     |
| • Battery Type                 | Lithium(rechargeable),<br>1500mAH/3.7V              |
| • Battery Run Life             | 72 hours, depending<br>on settings                  |

#### Storage Conditions

- |                           |                              |
|---------------------------|------------------------------|
| • Temperature Range       | -10°C to 45°C(14 to 113 )    |
| • Relative Humidity Range | 15% to 93%<br>non-condensing |

#### Operating Conditions

- |                              |                              |
|------------------------------|------------------------------|
| • Temperature Range:         | 5°C to 40°C(41 to 104 )      |
| • Relative Humidity Range    | 30% to 75%<br>non-condensing |
| • Atmospheric pressure range | 700hPa to 1060hPa            |

## REIMBURSEMENT

The PRO Series of pumps are reimbursable under most third party payer plans. Below are the Medicare HCPCS codes for the Negative Pressure Wound Therapy System:

#### Therapy Units

#### (PRO-MINI™, PRO-II® and PRO-III®) Code: E2402

- Negative pressure wound therapy electrical pump, stationary or portable

#### DRESSING CHANGE KIT Code: A6550

- Wound care set, for negative pressure wound therapy electrical pump, includes all supplies and accessories

#### CANISTER Code: A7000

- Canister, disposable, used with suction pump, each

*The HCPCS information is for information purposes only. It represents no statement, promise, or guarantee by DeRoyal concerning level of reimbursement, payment, or charge. It does not and is not intended to increase or maximize reimbursement, nor does it promise or guarantee that the codes listed will be appropriate or that reimbursement will be made. Please consult your payor organization to obtain the most current information about your local Medicare Part B coverage and reimbursement policies.*

# ADVANCING the art and science of NPWT



## APPLICATION VIDEOS

For further instructions on how to apply DeRoyal's dome connector, and other specialty dressings, please visit [www.deroyal.com](http://www.deroyal.com) or subscribe to DeRoyal's YouTube channel. Below is a complete list of helpful tutorials:

- Application of Dressing with Dome Connector
- Application of Foam Dressing with Drain
- Application of Gauze Dressing with Dome Connector
- Continuous Pressure Therapy Mode
- Customizing Sensitivity Levels
- Operating the PRO Series Therapy Units
- PRO-II® Components and Set Up
- PRO-III® Components and Set Up
- Skin Prep
- Specialty Dressing Application - Bridge Dressing
- Specialty Dressing Application - Mushroom Dressing
- Specialty Dressing Application - Offsetting Technique
- Understanding Alarms
- VPT® (Variable Pressure Therapy) Mode



Scan QR Code to  
view videos

The Prospera® Series Negative Pressure Wound Therapy Systems are indicated for patients who would benefit from a suction device, as the device may promote wound healing. Please read and understand all Negative Pressure Wound Therapy pump and kit warnings, cautions and directions completely and carefully before use. Failure to do so may result in serious injury to either the patient or the user. The use of accessories, canisters and spare parts other than those recommended by and/or sold by DeRoyal may compromise the safety and function of the device.

### Negative Pressure Wound Therapy is contraindicated for:

- Necrotic tissue
- Unexplored or non-enteric fistulas
- Untreated osteomyelitis
- Wounds containing malignant tissue
- Exposed arteries, veins, nerves (including vagus nerve), blood vessels or internal organs AND
- Exposed anastomotic site

### Please take proper precautions for patients who are or have:

- Difficult wound hemostasis
- On anticoagulation or active bleeding
- Close proximity of blood vessels, organs, muscle, wounds in close proximity and fascia requiring adequate protection
- Irradiated or infected vessels and tissue
- Bony fragments
- Untreated malnutrition
- Non-compliant or non-responsive
- Paralysis associated with the affected area or spinal cord injuries
- Circumferential dressing application
- Use near vagus nerve
- Patients requiring: MRI

For a complete listing of Features, Benefits, Indications and Contraindications, please visit [deroyal.com/npwt](http://deroyal.com/npwt).



Scan QR Code  
to view NPWT on  
[www.deroyal.com](http://www.deroyal.com)

### † References

1. Morykwas MJ, Argenta LC, Shelton-Brown EI, McGuirt W. Vacuum-Assisted Closure: A new method for wound control and treatment: Animal studies and basic foundation. *Annals of Plastic Surgery* 1997;38:553-562.
2. Borquist, O., Ingemansson, R., Malmjö, M., The Influence of Low and High Pressure Levels during Negative Pressure Wound Therapy on Wound Contraction and Fluid Evacuation. *Plastic and Reconstructive Surgery*, February 2011; 127:2: 551-559
3. Eberlein T, Fendler H, Ahearn C. Using a new technique for negative pressure wound therapy (NPWT) for the management of chronic, non-healing wounds. *SAWC 2008*, San Diego
4. Eberlein T, Fendler H. Using a new technique of negative pressure wound therapy (NPWT), Variable Pressure Therapy (VPT) for the management of chronic, non-healing wounds. *JWOCN* May/June 2009;36(35):S23
5. Malmjö, M., Gustafsson, L., Lindstedt, S., Gesslein, B., & Ingemansson, R. (2012). The Effects of Variable, Intermittent, and Continuous Negative Pressure Wound Therapy, Using Foam or Gauze, on Wound Contraction, Granulation Tissue Formation, and Ingrowth Into the Wound Filler. *Eplasty*, 12, e5.
6. An in-vitro laboratory study using the Kirby-Bauer Susceptibility Test to determine antimicrobial properties by measuring the zone of inhibition. Data on file with DeRoyal Industries.
7. Davydov YA, Malafeeva AP, Smirnov AP. Vacuum therapy in the treatment of purulent lactation mastitis. *Vestnik Khirurgii*. 1986;9:66-70.

### Trademark Attributions

DeRoyal, the DeRoyal logo, Improving Care. Improving Business. Continuum, Dermanet, Pro-II, Pro-III, Prospera, TopDraw, Transeal, and VPT are registered trademarks of DeRoyal Industries, Inc.

Advanced NPWT Solutions and PRO-MINI are trademarks of DeRoyal Industries, Inc.







DeRoyal Industries, Inc.  
200 DeBusk Lane, Powell, TN 37849 USA  
800.DEROYAL or 865.938.7828  
Customer Service: 800.251.9864  
[www.deroyal.com](http://www.deroyal.com)

© 2017, DeRoyal Industries, Inc. | All Rights Reserved

Reprint #: 0-2326 | Rev. 01/18